

Garbage should be placed at the designated collection point on the morning of the collection day (by 8:00 a.m.). Garbage is also collected on holidays.

Please help each other to keep the collection point clean.

Burnable garbage: Twice a week * If most of the garbage is placed in the designated yellow bag, it can be disposed of as burnable garbage.

Food scraps, vegetable peels and stems, fish bones, shells, eggshells, etc.

Used tissues, soiled paper, diapers, photos, receipts, vinyl paper, etc.

Please fold futons and carpets to less than 1 meter in length, tie them with string, and remove them as they are.

Please dispose of soiled old clothes, mayonnaise, toothpaste containers, and plastic products (without plastic mark) with stains such as paint stains, even if they have a plastic mark on them.



Non-burnable garbage Once a month * If most of the body is in the designated bag (transparent), it can be disposed of as non-burnable garbage.

Glass, light bulbs, fluorescent bulbs, mirrors, empty cans and bottles other than edible items, dishes, umbrellas, pots, pans, knives, etc.

Air conditioners, televisions, refrigerators, washing machines, and personal computers cannot be disposed of.



Plastic containers and packaging Once a week *Please put them out in designated bags (light green).

Bags from supermarkets, convenience stores, etc., outer films of confectioneries, ramen noodles, etc., bags of vegetables, frozen foods, etc.

Trays for fresh food, containers for convenience store box lunches, Styrofoam used as cushioning material

Packaged foods such as eggs and tofu, cups for pudding, cup ramen, etc. *Wash lightly.

Clean detergent containers, cooking oil bottles, plastic bottle caps and labels, etc.



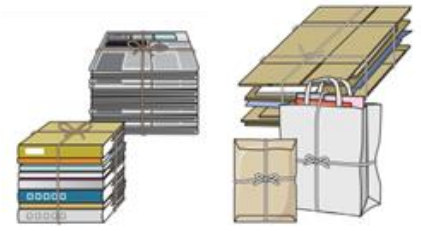
Empty cans and bottles Twice a month *This applies to beverage and food containers from households.

*Unscrew the caps and remove the contents. *Wash them with water.

Please be sure to separate empty bottles (light blue basket) from empty cans (orange basket). *No bags are required.



Used paper: Twice a month *Please separate the paper by type and tie it with string before putting it out. Please separate them by type and tie them up with string. Newspapers, advertisements, and flyers can be put out together. Please crush and flatten cardboard boxes. Magazines and miscellaneous paper can be woven and tied up. Magazines and other miscellaneous paper materials can be placed in paper bags or envelopes.



Used clothing: Twice a month *Please put used clothing in commercially available visible bags other than the garbage bags designated by Owari-Asahi City. T-shirts, pants, skirts, underwear, socks, sweaters, blankets, sheets, and towels are acceptable. Please dispose of soiled items, down jackets, curtains, etc. in burnable trash.



Ignitable hazardous materials Once a month

Rechargeable batteries *Please put them in a commercially available bag with visible contents that is not the Owari-Asahi City designated garbage bag and place in the basket. Rechargeable batteries (lithium-ion batteries, nickel-cadmium batteries, nickel batteries), mobile batteries, heated cigarettes (including chargers), and electronic cigarettes are acceptable. *Disposable dry batteries are not eligible. *Products that do not have removable rechargeable batteries should be discharged as "small household appliances."



Spray cans and cassette cylinders *Please put them out in a basket. Please be sure to use up the contents and vent the gas. Please be sure to use up the contents and do not puncture them. Spray cans (deodorizers, insecticides, hair dressers, etc.) and cassette cylinders (other gas cylinders are not acceptable)



Plastic bottles Always *Can not be collected at collection points. Collection baskets are available at the City Hall, community centers, and large supermarkets.

(1) Remove caps and labels (dispose of as plastic waste) (2) Wash with water (3) Crush with your foot (4) Place in collection basket



【Inquiry】